

# ACCURATE HEMOGLOBIN AND HEMATOCRIT RESULTS WITH ONE SIMPLE TEST



Robust and easy to use

Evaluated for various species

Reliable in a wide temperature range

Adjustable display for different light conditions



For veterinary medicine

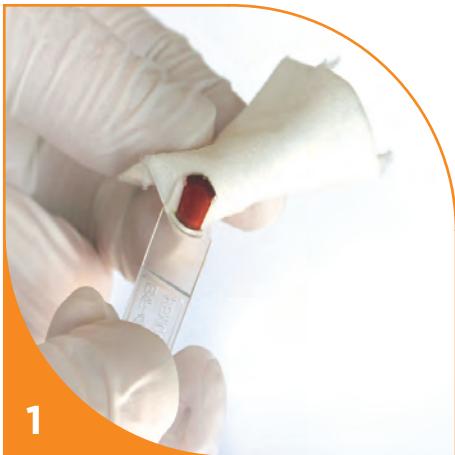
**EKF**  
**DIAGNOSTICS**

SCIENCE MADE SIMPLE



<p><b>EASY TO USE</b></p>	<ul style="list-style-type: none"> <li>• User friendly features minimises training time</li> <li>• Step by step instructions on screen</li> <li>• Adjustable backlit touch screen - readable in intense sunlight or bright artificial light</li> <li>• User selectable language menu</li> <li>• Soft-load cuvette holder eliminates risk of contamination</li> </ul>
<p><b>PRACTICAL AND PORTABLE</b></p>	<ul style="list-style-type: none"> <li>• Hemoglobin and hematocrit results from one sample available after 25 - 60 seconds</li> <li>• 8µl blood sample</li> <li>• Microcuvette eliminates air bubbles giving consistent results</li> <li>• Compact in size and weighing just 700g</li> <li>• No maintenance required. Auto self-test</li> <li>• Integrated rechargeable battery (100 hours)</li> <li>• Operating ambient temperature 15°C - 40°C</li> </ul>
<p><b>ACCURATE AND RELIABLE</b></p>	<ul style="list-style-type: none"> <li>• Photometric, azide methemoglobin method</li> <li>• Measuring range: 0 – 25.6g/dL; 0 - 15.9mmol/L</li> <li>• Imprecision: CV&lt;2%</li> <li>• Linearity: 0-20g/dl ± 0.3g/dl; &gt;20g/dl ± 0.7g.dl</li> <li>• Calibrated to NCCLS reference method</li> <li>• Stores up to 4,000 results</li> <li>• Control cuvette included</li> </ul>
<p><b>HEMO VET MANAGER</b></p>	<ul style="list-style-type: none"> <li>• Bar code identification of animals, operators and control levels</li> <li>• Connect to PC via serial port or Bluetooth</li> <li>• Quality Control lockout function</li> <li>• Stores 4,000 patient results and 500 QC results</li> </ul>

## Hemoglobin and Hematocrit measurement for veterinary medicine



1 Collect 8µl blood sample.



2 Put microcuvette into analyser.



3 Result appears in 25 - 60 seconds.

**Distributed by**

**Manufacturer**  
**EKF diagnostic GmbH**  
 Ebendorfer Chaussee 3  
 D-39179 Barleben, Magdeburg  
**Tel** +49 (0)39203 7850

**Sales**  
**EKF Diagnostics Holdings plc**  
 Avon House, 19 Stanwell Road,  
 Penarth, Cardiff, UK, CF64 2EZ  
**Tel** +44 (0)29 20 710570  
[www.ekfdiagnostics.com](http://www.ekfdiagnostics.com)

**EKF**  
**DIAGNOSTICS**  
 SCIENCE MADE SIMPLE